

Remodeling Tips

COURTESY OF FATHER AND SON BUILDERS AND REMODELERS  AUTUMN 2003



FATHER AND SON BUILDERS

Telephone (215) 634-7800
2718 E. ALLEGHENY AVE.
PHILADELPHIA, PA 19134

NOW ON THE WEB

www.FatherAndSonBuilders.com

Visit our web site to see more!!!

FIRST-CLASS MAIL
U.S. POSTAGE
PAID
PHILADELPHIA PA
PERMIT NO 1660



MEMBER
EASTERN
PENNSYLVANIA
BUREAU



Going to the Movies

The smell of freshly popped corn, the aisle lights guiding you to your seat, the plush recliner adjusting with built-in motorized controls, the wide screen covering the wall in front of you—all of this suggests that you are really “at the movies.” The lights dim, the beams of the projector hit the screen, the sound begins to envelope you with a heart-thumping intensity—and you are off to the magical world of a dedicated home theater.



Photo: Courtesy of Zach Simpson, Innovative Systems

(continued on page 2) *A luxurious dedicated home theater as seen from the cushy comfort of the lounge seating.*

Inside This Issue...

- Flooring Trends: Bamboo Flooring
- Emotional Sanctuary at Home
- Father & Son in Top 500 - Again!
- Happy Staying Right Where You Are



WE SUPPORT OUR TROOPS



Going to the Movies

(continued from page 1)

An entertainment room is a very popular space today for homeowners to spend time in. This is a multipurpose room, which may include a fireplace, pool table, wet-bar, game table, sitting area with sofas and chairs, and a large-screen television. It is a wonderful, inviting place for people to gather and engage in a wide variety of activities together.

However, when you describe a room designed with the express purpose of accurately re-creating the theater experience, right down to the tremor you feel in the floor when the aliens land, you are talking about a dedicated home theater. Here, away from the crowds and the distraction of other movie patrons whispering during the quiet scenes, you can fully enjoy the show.

These windowless rooms use dimmer-controlled ambient lighting to create the mood. Careful attention is paid to room dimensions and design. For optimum viewing and listening, the seating is placed at the proper distance from the screen, the floor may be ramped or have risers, and the walls are often nonparallel, projecting outward from the screen.

The speaker placement and selection is calculated to achieve surround sound.

Dolby digital sound consists of six speakers and a low bass subwoofer installed throughout the room, either in the floor or in the walls. The ceiling, floor and walls are soundproofed to help reduce the transmission of sound into other parts of the home.

To accurately replicate the film as closely as possible to the way the directors intended it to be, a home theater uses a wide screen with a separate projector, which is usually suspended from the ceiling. A direct-view television set, in comparison, will cut off a few inches of the picture.

The screen may be covered by drapery, which opens automatically when the lights are dimmed, as in a traditional movie theater. In other home theaters the screen may remain exposed, or it can be recessed into the ceiling and dropped



The same home theater, viewed from the opposite direction, showing the ceiling mounted projector and the wall of equipment in back.

down for viewing. In the back, an alcove encloses the audio and video support equipment.

The budget for building a dedicated home theater will most likely be higher than that for an entertainment room. However, a home theater creates a very special environment that simply cannot be captured in a room where other activities are going on. For certain people, the pleasure of watching in their own home a favorite movie in its entire cinematic splendor, makes the price tag well worth it.



Photo: Courtesy of Zach Simpson, Innovative Systems
www.innovativesystems-av.com

FLOORING TRENDS: Bamboo Flooring

When you think of bamboo, you may not immediately envision your dining room floor. However, bamboo has been used as a structural building material in Asian cultures for centuries. Now, an increasing number of homeowners in America are finding it to be a wonderful flooring material.

Bamboo has a clean, warm, elegant look that is also unusual and exotic enough to attract favorable attention. It is a durable flooring material, and can be harder even than oak and more dimensionally stable than maple, depending on the hardness of the particular plants from which it is processed.

One very appealing advantage bamboo flooring offers is that it is produced from an environmentally sustainable and rapidly renewable resource. Hardwood trees require 40 to 60 years to grow.



Exquisite site-finished flat grain "caramelized" bamboo flooring.

Bamboo is a fast-growing grass, and harvesting it is like cutting your lawn. The plant is not destroyed, but rather continues to grow—about 40 feet in three years.

The bamboo is cut into one-inch wide strips that are laminated together to form planks of similar size to hardwood flooring. The strips can be laminated horizontally,

so that the bamboo appears as long, one-inch wide stripes on your floor. In another method, the bamboo strips are laminated vertically, and the bamboo appears as long, 1/4-inch stripes.

The bamboo, left in its natural state, is a beautiful blonde color.

Carbonized bamboo flooring results from a process of heat and pressure being applied to the bamboo. This process turns the bamboo a rich amber color that permeates through the bamboo. This process also produces a slightly softer material.

Caring for a bamboo floor is basically the same as for any traditional hardwood floor. Vacuum or sweep the floor regularly, and remove spills promptly. Clean the floor with a hardwood floor cleaner that does not contain wax or ammonia. Place mats at the exterior doors to collect sand and grit that could damage your floor finish, and install protectors under the legs of furniture.



Photo: By Steven Young / Courtesy of Timbergrass LLC
www.timbergrass.com

Emotional Sanctuary at Home

A spa is a quiet, soothing environment, designed specifically to help you relax, refresh and rejuvenate your mind, body and spirit. Everything in the spa, from the visual beauty to the calming sounds, is carefully placed to assist you in reaching this goal. After the rapid pace of a typical day, who would not welcome the opportunity to take a much-needed break at the spa?

Now you can spend time everyday in the comfort and familiarity of your very own home spa in your bathroom. Manufacturers, like Kohler Co., have designed bathroom products that make that desire possible.

Celebrating the rhythmic grace and beauty of flowing water and the calming integrity of natural materials, Kohler Co. launched

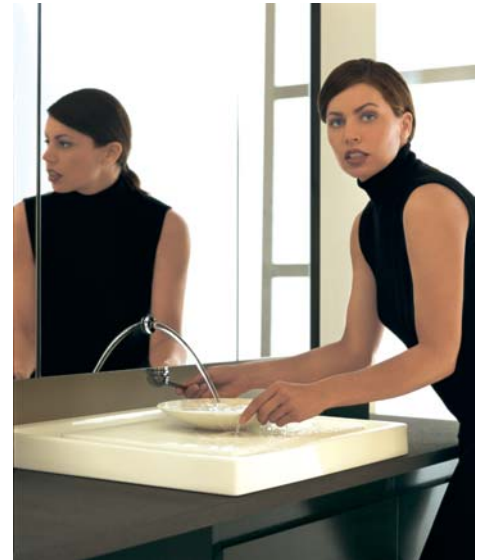
the Purist™ Suite this year, the industry's first coordinated home spa collection for the bath. Portraying contemporary, minimalist aesthetics and leading-edge technology, the Purist home spa products make a simple and elegant design statement.

Assimilating such unique elements as natural lavastone countertops; artistically designed wet-surface lavatories and faucets integrated within mirrored storage to capture the visually arresting interplay of flowing water; and an ultra-deep soaking bath with effervescence and chromatherapy, the Purist Suite captures the very base elements of Earth with Zen-like simplicity to create pure harmony with water. With more than 10 components,

the Purist Suite celebrates and expands upon timeless bathing rituals that offer you, the homeowner, an enchanting escape—an ultimate peacefulness and sense of tranquility.

□

Below and Right: The Purist bath is engineered of high-gloss acrylic to be a shell within a shell, incorporating an overflow rim that allows the individual to be fully immersed. In addition, the bather has the option of adding effervescence and chromatherapy.



Above: The above-counter Wet Surface lavatory has a raised, flat center surface that sits flush with its outer edges. When water cascades on to its surface, it slides away into a surrounding channel. Mounted to the wall, the mirrored cabinet with an integral laminar-flow faucet creates a stunning image of flowing water.



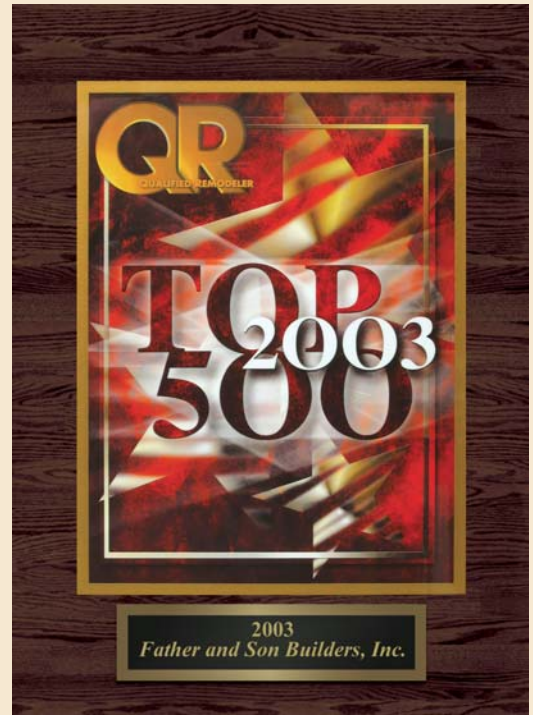
Left and Above: The Wading Basin lavatory boasts planes similar to its Wet Surface counterpart, but is characterized by a shallow flat basin. Both the Wet Surface and Wading Basin lavatories function with two removable fine porcelain hand basins. The open-bottom hand basin creates a seal with the lavatory's surface when filled with water, so it can be used as a wash basin. Simply lifting it releases the contents. The second hand basin is designed as a bowl and can be used with the lavatory or to transport spa treatments or other contents to additional areas within the room.



Father and Son Builders has been listed by *Qualified Remodeler*, a magazine for professional remodeling contractors, as one of the "Top 500" remodeling companies in the country **every year**

since 1994. We are proud to have achieved this ranking.

In light of this standing, we at **Father and Son Builders** wish to thank each and every one of our customers for your loyal patronage throughout the years. As we continue to grow, we want you to know that as individuals you matter to us. It is your individual satisfaction that remains of top-most importance to us. To ensure that you will want to keep coming back to "**The Name You Know and Trust,**" **Father and Son Builders**, we have pledged ourselves to a high level of professionalism, "**OLD-FASHIONED CRAFTSMANSHIP...MODERN SERVICE.**" We know that your satisfaction spells repeat business and referrals—the life-blood of our company. □



Happy Staying Right Where You Are

\$\$ CONSOLIDATE NOW \$\$

Combine all your credit card and loan balances into one low monthly payment. You could save hundreds a month and get the improvements you desire . . .

Call **Father and Son Builders** today at **215-634-7800** and let us help you explore the possibilities of improving or expanding your home from the basement to the roof, inside and out.

You enjoy your neighborhood. Wouldn't think of moving, but your home is starting to show its age. The exterior needs painting (again) and the windows are drafty and weather-beaten. The interior space seems dark and cramped. What should you do?

Father and Son Builders specialize in helping homeowners increase the beauty and value of their home through new vinyl siding, new windows and decks. With attractive new windows and easy-care vinyl siding on your home, your home's exterior will take on a whole new look, and in addition offer the benefits of low maintenance. To expand your home's living space, one of the most cost effective

approaches is to consider the design and installation of a deck structure.

Typically located at the rear of a resi-



dence (but not always) a deck just off the kitchen or dining room helps unite your home and yard so that outdoor living becomes a natural extension of indoor activities.

Customizing your deck with a safety railing, benches, planter boxes and shading trellis, are just a few design element options that can greatly increase your enjoyment of this new outdoor living space as well as enhance the value of the structure.

The experienced staff at **Father and Son Builders** will guide you in finding the best products to fit your particular needs and budget. Our professional carpentry team ensures your satisfaction in the completed job. So...

Don't Move—Improve! □